

ROTAVAL

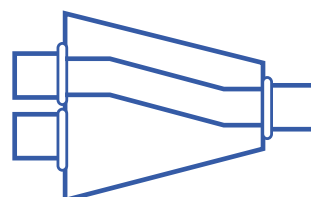
Keeping the World's Industries Solidly in control



Pipe Selector Diverter Valves

Subject to European & USA Patent Applications

Sizes 20mm–150mm



Pipe Selector Diverter Valves

Rota Val two and three-way 'Pipe Selector' Diverter valves have been developed to satisfy the needs of an ever more demanding market place, in particular the stringent requirements of the food and pharmaceutical industries, however they are also suitable for use in most other industries.

'Pipe Selector' Diverter valves are suitable for both lean and dense phase conveying systems (maximum 4 barg) and product temperatures between -40°C and $+80^{\circ}\text{C}$. The cross sectional area of the pipe through the valve does not have any steps or ledges and this ensures smooth product transfer.

A unique feature of both the two and three-way 'Pipe Selector' Diverter valves is that the inflatable seals used to seal between the inner rotating pipe and the outer fixed pipe ends remain permanently inflated, this eliminates the need for special controls.



PS Two-way Pipe Selector Diverter Valve

The PS Valve is a bolted assembly fabricated from 316L stainless steel and with aid of normal tools can be quickly dismantled for clean-down.

The fabricated design allows superior surface finishes without the porosity problems often associated with castings.

The compact design is manufactured from FDA approved materials and complies with USDA guidelines for the sanitary design and fabrication of dairy processing equipment.

The standard pipe ends are suitable for compression couplings; however dairy, quick-clamp couplings or flanges can also be fitted.



**PS Two-way Pipe Selector Diverter Valve
with flanged pipe connections**



PS Three-way Pipe Selector Diverter Valve

Features and Options

- Compact design
- Homogeneous and hygienic construction, crack and crevice free
- FDA approved materials
- Low component weights
- Simple unique seal control – seals remain inflated and protected even during changeover
- Suitable for both lean and dense phase conveying systems
- Converging or diverging applications
- Choice of pipe couplings, flanged, plain pipe and 'quick-clamp' FDA approved couplings
- Position indication
- Full range of surface finishes available, internally and externally
- Constant through bore section see table

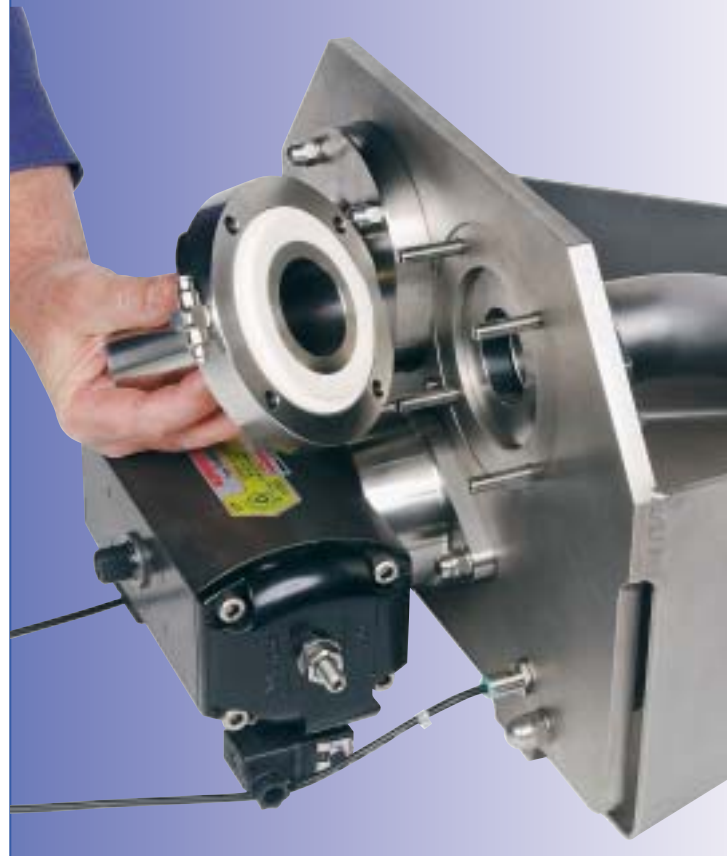


Quick disassembly for ease of cleaning



Inflatable seals

Optional FDA approved couplings



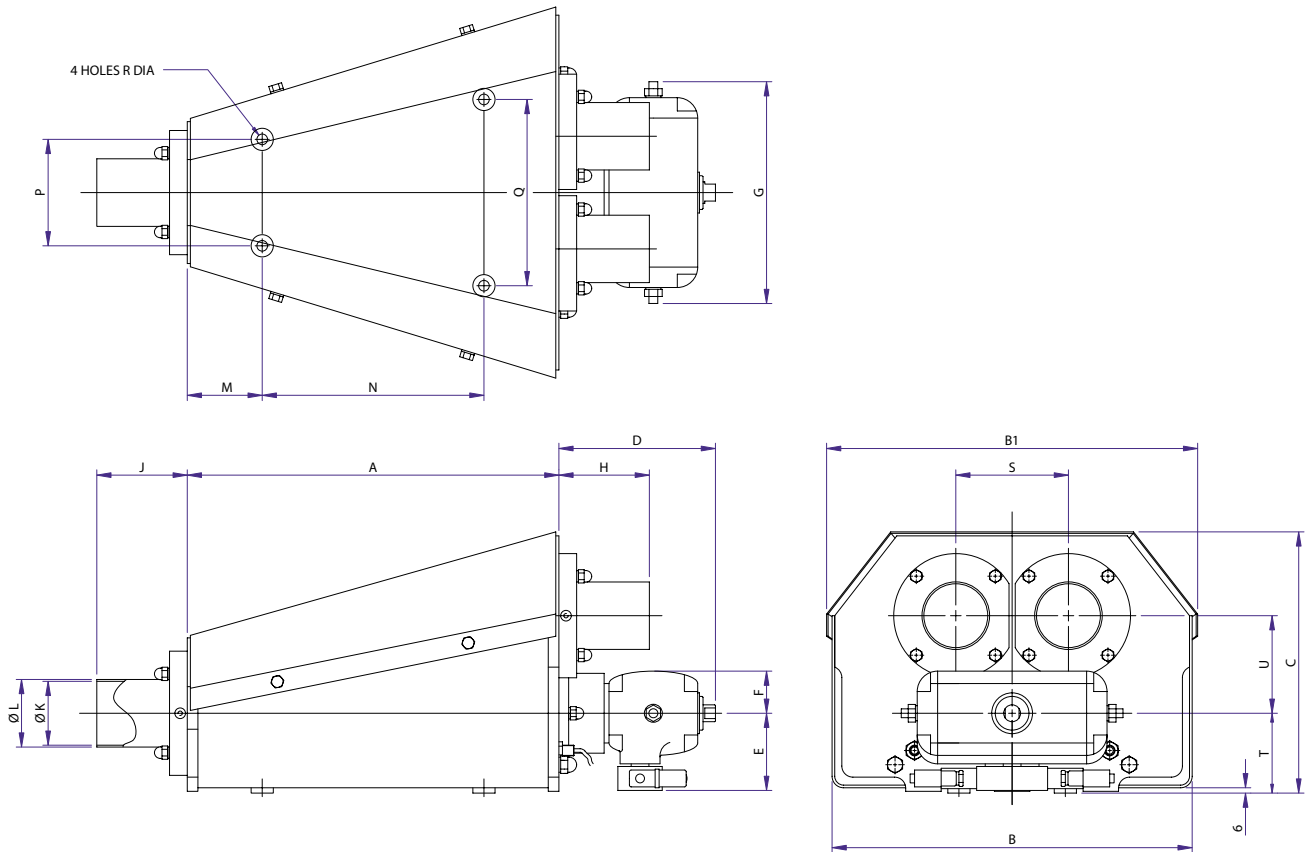
Internal pipe dimensions (Fixed)

- * Pipe ends minimum I/D
- * Pipe ends maximum I/D
- * Pipe ends maximum O/D
- Valve selection for ISO pipe
- Valve selection for NB sched 10
- Valve selection for metric/DIN pipe

	PS20	PS30	PS50	PS65	PS80	PS90	PS100	PS115	PS125	PS150
22.2 O/D	38 O/D	50.8 O/D	63.5 O/D	76.2 O/D	88.9 O/D	101.6 O/D	114.3 O/D	141.3 O/D	168.3 O/D	
18.9 I/D	35 I/D	46.6 I/D	59.3 I/D	72.0 I/D	82.8 I/D	95.5 I/D	108 I/D	134.5 I/D	162 I/D	
16mm	30mm	40mm	54mm	65mm	80mm	90mm	100mm	114mm	140mm	
22mm	40mm	54mm	65mm	80mm	90mm	108mm	125mm	150mm	180mm	
28mm	43mm	60mm	71mm	86mm	96mm	114mm	131mm	158mm	190mm	
DN15	DN32	DN45	DN50	DN65	DN80	–	DN100	DN125	DN150	
½NB	1¼NB	1½NB	2NB	2½NB	3NB	3¾NB	4NB	5NB	6NB	
DIN20	DIN32	DIN50	–	DIN65	DIN80	DIN100	–	DIN125	DIN150	

* Note: Minimum and maximum dimensions represent manufacturing limits. Actual permitted cross sectional change will be determined by material characteristics and type of pneumatic conveying system.

PS Pipe Selector Diverter Valves



Valve Type	A	B	B'	C	D	E	F	G	H	J	K
PS20	275	218	225	196	137	70	29	230	110	110	19
PS30	297	248	255	217	137	70	29	230	110	110	35
PS50	419	406	418	294	177	87	48	250	102	102	46.6
PS65	419	406	418	294	177	87	48	250	102	102	59.3
PS80	419	406	418	294	177	87	48	250	102	102	72.0
PS90	476	434	443	333	177	87	48	250	122	122	82.8
PS100	476	434	443	333	193	93	55	296	122	122	95.5
PS115	586	500	509	373	193	93	55	296	122	122	108.2
PS125	970	790	800	545	218	93	63	342	142	142	134.5
PS150	970	805	815	567	218	107	63	342	200	200	162

Valve Type	L	M	N	P	Q	R	S	T	U	Kgs
PS20	22.23	50	175	90	90	12	65	82	56.3	15
PS30	38	61	175	90	90	12	80	82	69	19
PS50	50.8	85	250	120	120	12	127	90	110	40
PS65	63.5	85	250	120	120	12	127	90	110	40
PS80	76.2	85	250	120	120	12	127	90	110	42
PS90	88.9	115	250	120	260	12	140	102	121	45
PS100	101.6	115	250	120	260	12	140	102	121	48
PS115	114.3	122	350	150	350	12	162	110	140.3	66
PS125	141.3	150	670	250	600	14	270	142	233.8	170
PS150	168.3	150	670	250	600	14	270	157	233.8	180

Materials of construction and/or alternative valve features may alter some of the stated dimensions. This information is therefore to be used for guidance only. Use certified drawings for planning-in. These will be issued against an order. These valves must not be considered as load-bearing without prior consultation.



Przedstawicielstwo w Polsce - PROORGANIKA S.A.

01-755 Warszawa, ul. Krasińskiego 69

Tel: +48 (022) 3260350 Fax: +48 (022) 3260351

Email: proorganika@proorganika.com.pl, www.proorganika.com.pl